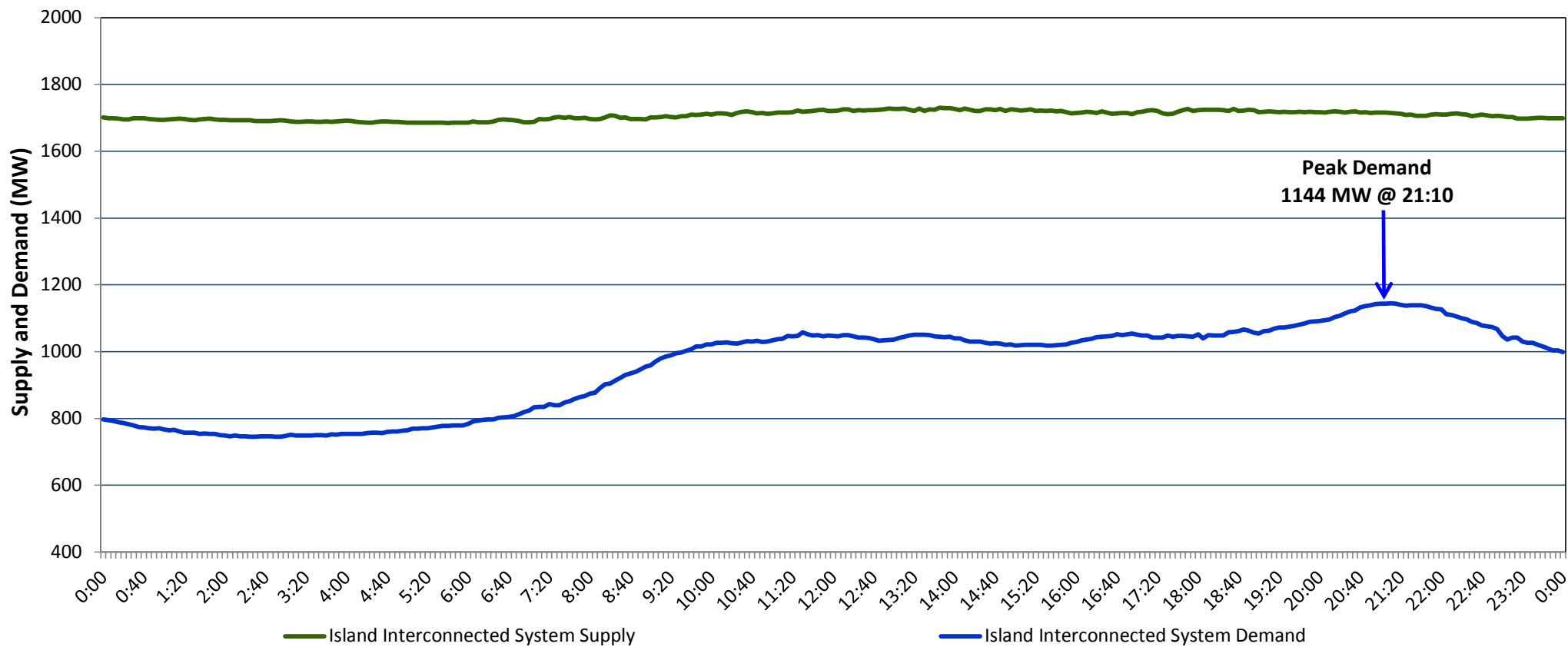


Newfoundland Labrador Hydro (NLH)
Supply and Demand Status Report Filed Monday, May 01, 2017

Section 1
Island Interconnected System Supply and Demand
Actual 24 Hour System Performance For Sunday, April 30, 2017



Supply Notes For April 30, 2017

1,2

- A As of 0829 hours, March 31, 2017, Holyrood Unit 1 available at 135 MW (170 MW).
B As of 1526 hours, April 03, 2017, Stephenville Gas Turbine available at 25 MW (50 MW).
C As of 1520 hours, April 19, 2017, Hawke's Bay Diesel Plant available at 2.5 MW (5 MW).
D As of 1155 hours, April 23, 2017, Bay d'Espoir Unit 5 unavailable due to planned outage (76.5 MW).
E As of 1616 hours, April 25, 2017, Holyrood Unit 3 unavailable due to planned outage 135 MW (150 MW).
F As of 1703 hours, April 25, 2017, Holyrood Unit 2 available at 165 MW (170 MW).

Section 2
Island Interconnected Supply and Demand

Mon, May 01, 2017 Island System Outlook ³			Seven-Day Forecast		Temperature (°C)		Island System Daily Peak Demand (MW)
					Morning	Evening	
Available Island System Supply: ⁵	1,710	MW	Monday, May 01, 2017		-2	-2	1,265
NLH Generation: ⁴	1,385	MW	Tuesday, May 02, 2017		-2	-1	1,320
NLH Power Purchases: ⁶	110	MW	Wednesday, May 03, 2017		2	6	1,230
Other Island Generation:	215	MW	Thursday, May 04, 2017		5	5	1,075
Current St. John's Temperature:	-3	°C	Friday, May 05, 2017		2	3	1,200
Current St. John's Windchill:	-9	°C	Saturday, May 06, 2017		3	3	1,005
7-Day Island Peak Demand Forecast:	1,320	MW	Sunday, May 07, 2017		4	4	1,040

Supply Notes For May 01, 2017

3

G At 0700 hours, May 01, 2017, Holyrood Unit 1 available at 120 MW (170 MW).

- Notes:
1. Generation outages for running and corrective maintenance are included. These are not unusual for power system operations. They generally do not impact customer supply. The power system operators schedule outages to system equipment whenever possible to coincide with periods when customer demands are low and sufficient supply reserves are available. However, from time to time equipment outages are necessary and reserves may be impacted.
 2. Due to the Island Interconnected System being isolated from the larger North American grid, when there is a sudden loss of large generating units some customer's load must be interrupted for short periods to bring generation output equal to customer demand. This automatic action of power system protection, referred to as under frequency load shedding, is necessary to ensure the integrity and reliability of system equipment. Under frequency events typically occur 5 to 8 times per year on the Island Interconnected System and the resultant customer load interruptions are generally less than 30 minutes.
 3. As of 0800 Hours.
 4. Gross output including station service at Holyrood (24.5 MW) and improved NLH hydraulic output due to water levels (35 MW).
 5. Gross output from all Island sources (including Note 4).
 6. NLH Power Purchases include: CBPP Co-Gen, Nalcor Exploits, Rattle Brook, Star Lake, Vale capacity assistance (when applicable), and Wind Generation.

Section 3
Island Peak Demand Information
Previous Day Actual Peak and Current Day Forecast Peak

Sun, Apr 30, 2017	Actual Island Peak Demand ⁸	21:10	1,144 MW
Mon, May 01, 2017	Forecast Island Peak Demand		1,265 MW

Notes: 8. Island Demand is supplied by NLH generation and purchases, plus generation owned and operated by Newfoundland Power and Corner Brook Pulp & Paper (Deer Lake Power, DLP).